

MARCH 21, 2018

ADDENDUM NO. 1
CITY OF DINUBA

RANDLE AVENUE CONSTRUCTION PROJECT
15-CDBG-10560

DINUBA, CALIFORNIA

NOTICE

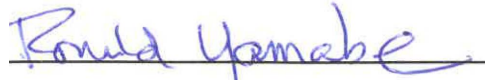
Notice is hereby given that the plans and specifications for this project have been revised as prescribed by this Addendum. It is mandatory that all bidders comply with the changes detailed herein. This Addendum shall be signed by the Bidder and attached to the inside of the Contract Documents. All changes, omissions, additions and alterations in, on and to the Contract Documents and Specification will apply to proposals made for the execution of the various parts of the work affected thereby. Careful note of this Addendum shall be taken by all parties of interest so that the proper allowance may be made in all computations, estimates and contracts, and all trades affected shall be fully advised in the performance of the work which will be required by them. In cases of conflict between the Plans, Specifications and this Addendum, this Addendum shall govern.

1. Add Sheets 12A, 12B and 12C to the plan set for the project. These sheets contain the design for the street light system.

Bidders Acknowledgment

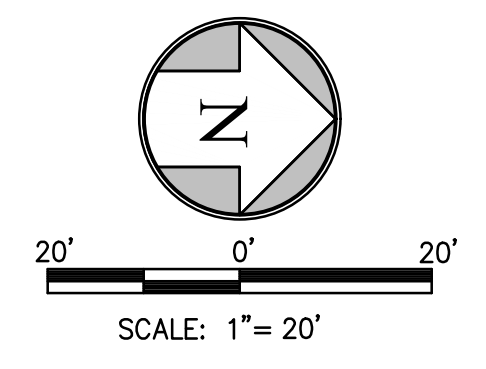
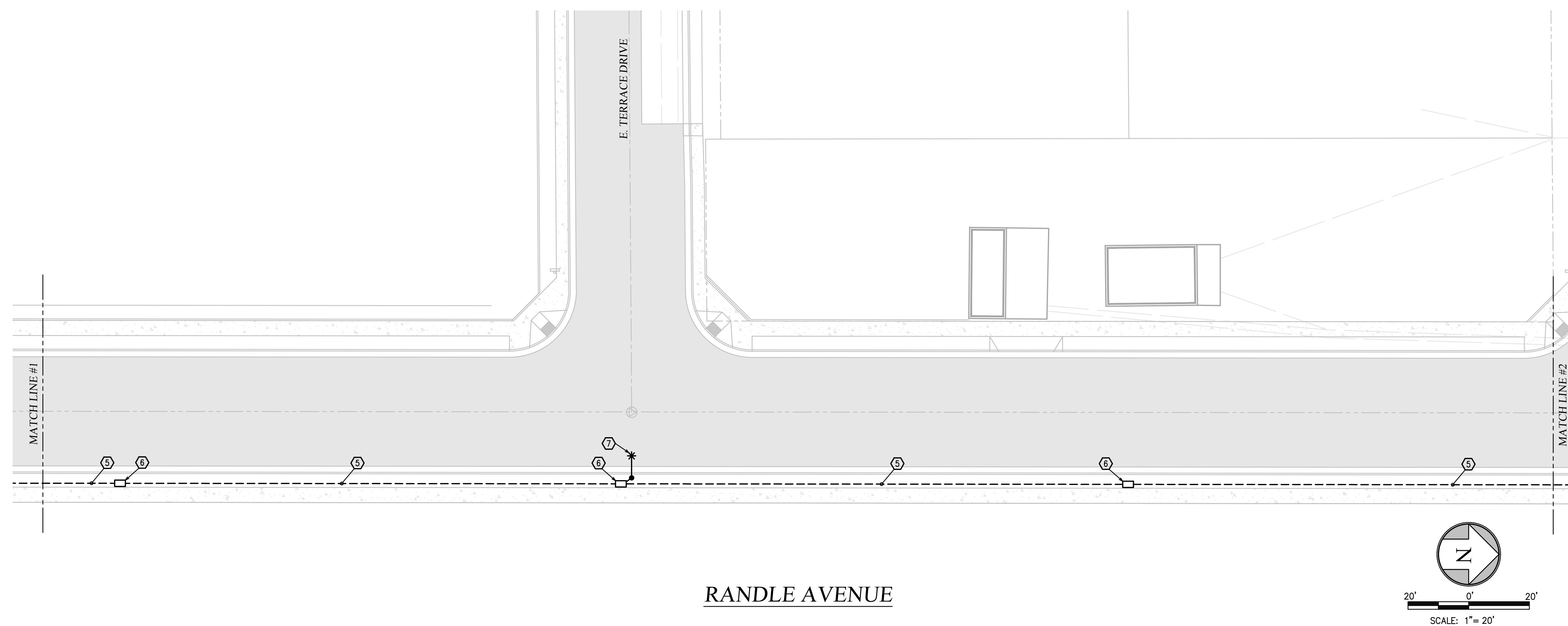
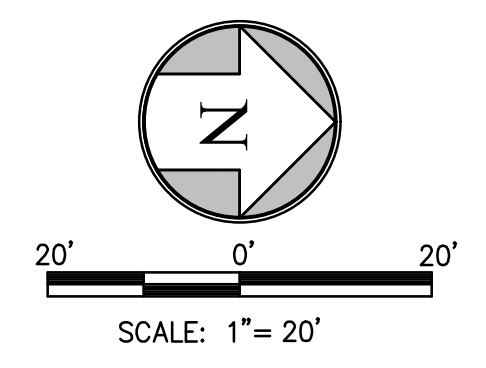
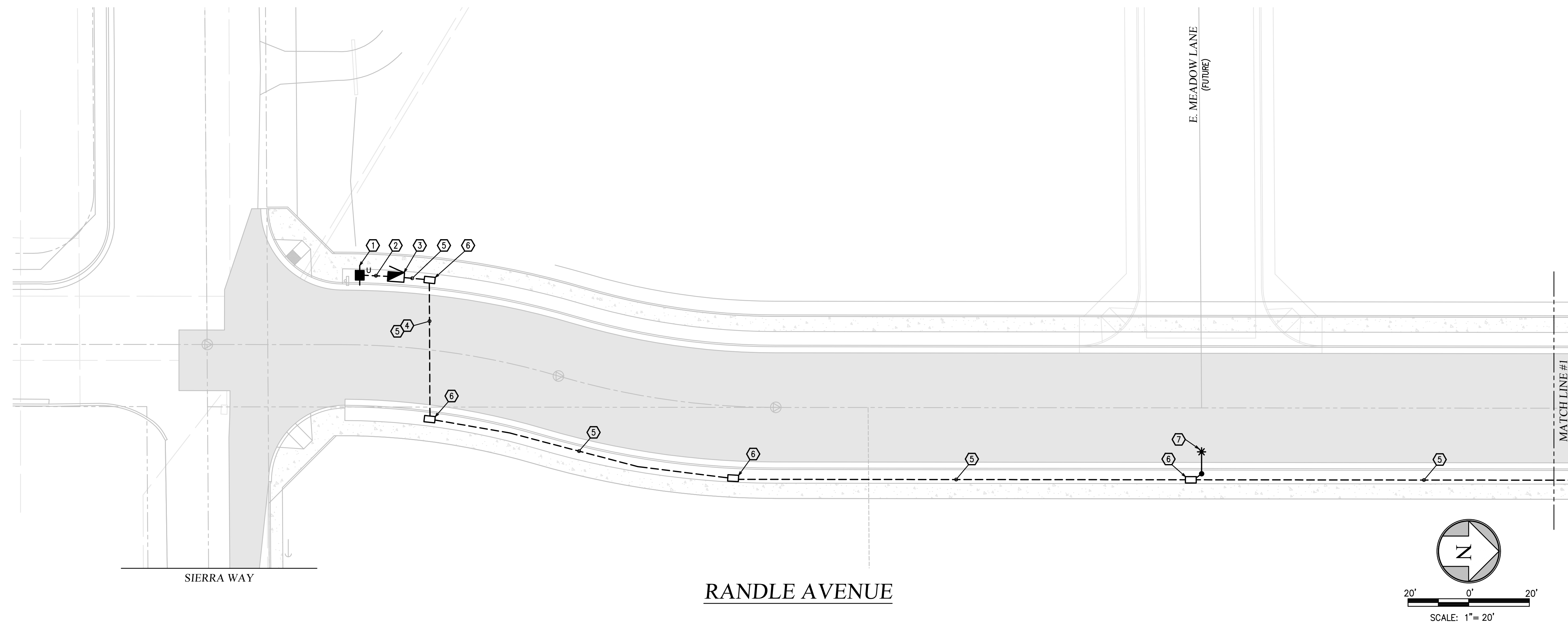
Ronald S. Yamabe, P.E.

Bidder's Authorized Representative



City Engineer

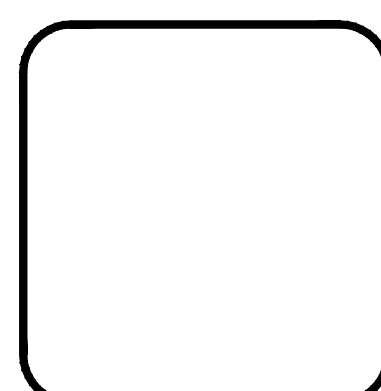
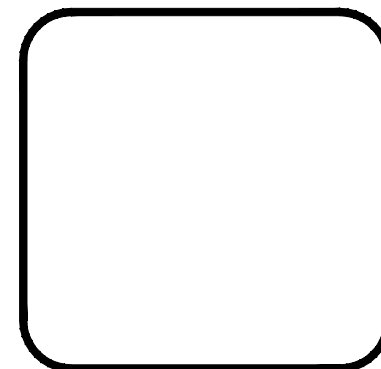
2: LAYOUTS (LAWYER) 10/27 - RANDLE AVE STREET LIGHTS (LAWYER) - ELECTRICAL 3/16/2018 8:39 PM

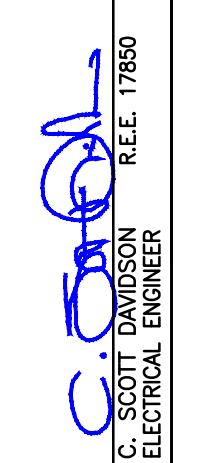


KEY NOTES ○

1. PROPOSED RISER AND UTILITY CONNECTION AT UTILITY POLE.
2. PROPOSED 3\"/>

REVISIONS	DATE	BY	DESCRIPTION



APPROVED BY: 


DATE: 3/16/18

PROJECT: RANDLE AVENUE STREET LIGHTS

DESIGNED BY: SCOTT DAVIDSON

ELECTRICAL ENGINEER

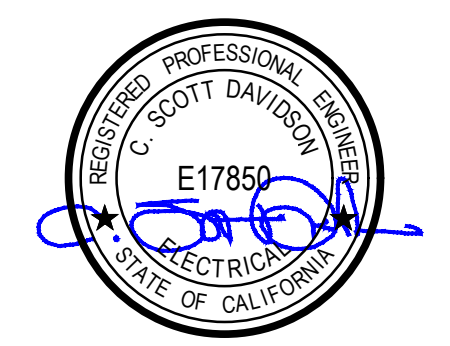
REG. NO. E17850



6051 N. FRESNO ST., STE. 200 TEL: (559) 733-0440
 FRESNO, CA 93710 WWW.QKINC.COM
 © COPYRIGHT BY QK ENGINEERING, INC. UNAUTHORIZED USE PROHIBITED.

CITY OF DINUBA
 1088 E. HAWAII AVE.
 DINUBA, CA 93618
 (559) 591-5923

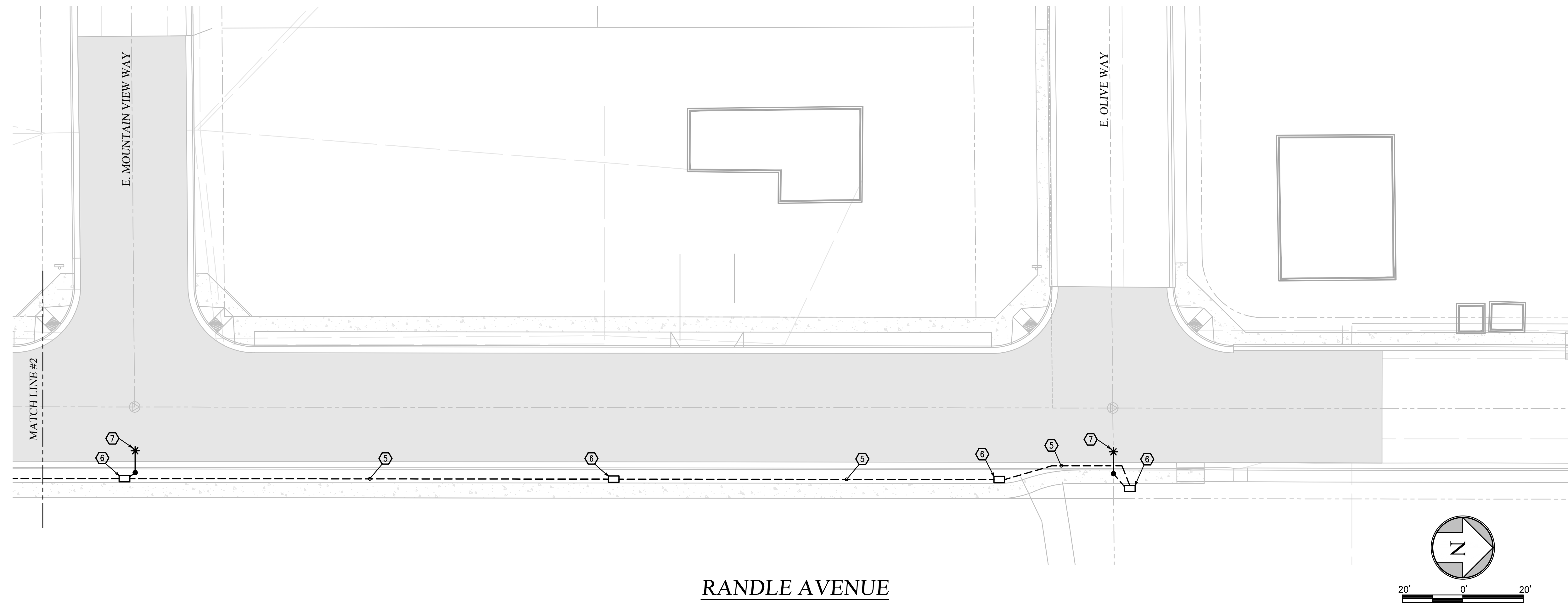
RANDLE AVENUE CONSTRUCTION PROJECT
ELECTRICAL STREET LIGHTING PLAN
RANDLE AVENUE



HD Hardin-Davidson Engineering
 356 Pollasky Ave., Suite 200
 Clovis, CA 93612
 559.323.4895 tel • 559.323.4928 fax

PROJECT NO.:
 DRAWN BY:
HDE
 CHECKED BY:
CSD
 SCALE:
AS NOTED
 SHEET NO.:
12 A **12** OF **21**

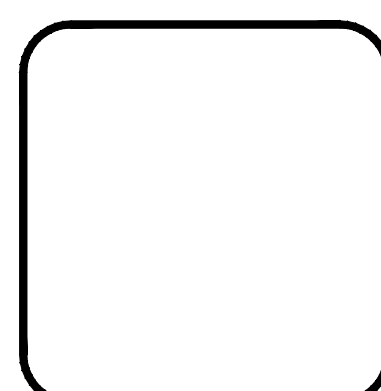
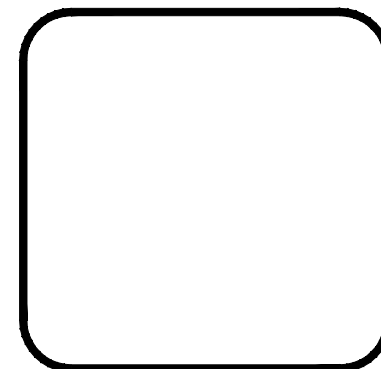
2:USERS\GAD\ANAPA\18047 - RANDLE AVE STREET LIGHTS\GAD FILES\18047 - ELECTRICAL 3/19/2018 8:39 PM

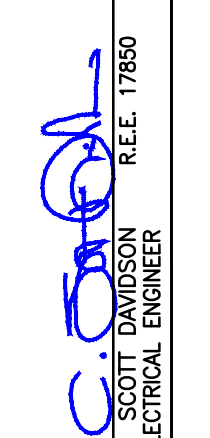


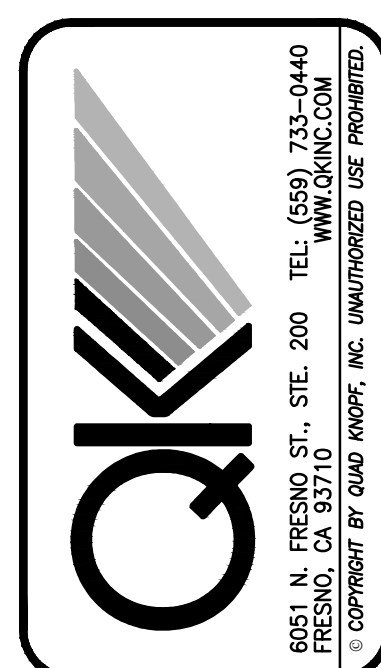
KEY NOTES

1. PROPOSED RISER AND UTILITY CONNECTION AT UTILITY POLE.
2. PROPOSED 3" C. UTILITY SECONDARY.
3. POWER PEDESTAL 'PP1'.
4. STREET CROSSING PER CITY OF DINUBA STANDARDS.
5. LIGHTING CIRCUIT: 20A 120V 2" C. 2#8, 1#6.
6. #5 TRAFFIC RATED PULLBOX.
7. LIGHT POLE AND 70W LED COBRA HEAD FIXTURE WITH MODULAR PHOTOCELL. RISE 2" C. FROM PULLBOX TO LIGHT POLE, PULL IN CONDUCTORS, AND CONNECT.

REVISIONS	DATE	BY	DESCRIPTION

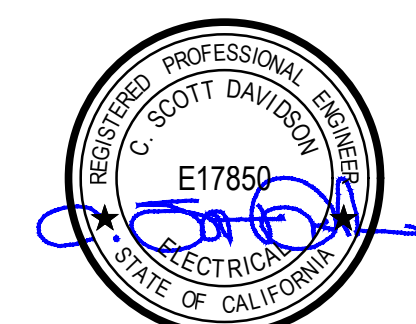


APPROVED BY: 
 DATE: 3/19/18
 C. SCOTT DAVIDSON, REE: 17850
 ELECTRICAL ENGINEER



CITY OF DINUBA
 1088 E. HAMM AVE.
 DINUBA, CA 93618
 (559) 591-5923

RANDLE AVENUE CONSTRUCTION PROJECT
ELECTRICAL STREET LIGHTING PLAN
RANDLE AVENUE



HD Hardin-Davidson Engineering
 356 Pollasky Ave., Suite 200
 Clovis, CA 93612
 559.323.4895 tel • 559.323.4928 fax

PROJECT NO.:
 DRAWN BY:
HDE
 CHECKED BY:
CSD
 SCALE:
AS NOTED
 SHEET NO.:
12 B **13** OF **21**

